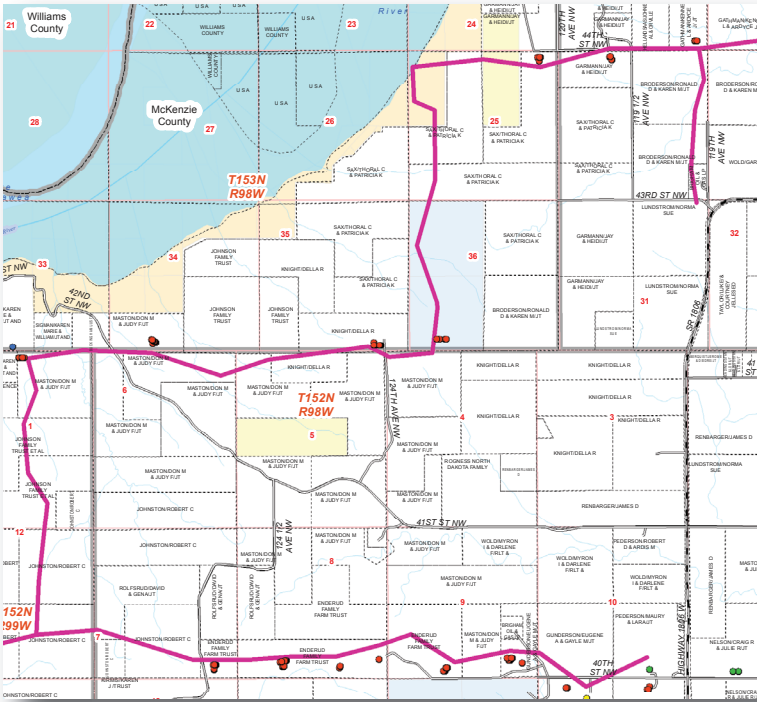


GIS Database Design & Management

Experience

ECS utilizes ESRI's Arc Explorer / ArcGIS to manage, create and publish natural resource database products and maps. GIS spatial datasets (shape files, coverages, and CAD files) are managed, incorporated into existing third party databases or published in static form. Client proprietary and scope specific information is combined with federal, state and local public datasets to present and analyze data for planning and marketing purposes. Clients have the ability to view their finished projects at any time using our web interface.



Commitment

ECS has a 40+ year history of collecting accurate, timely survey data and have made a similar commitment to data analysis.

- GIS Analysts on staff
- Localized and distributed computing systems running mirrored hard drives for maximum data redundancy
- High-speed network with both onsite and offsite backups to ensure no data is lost
- Fulltime IT professional to ensure data protection and availability

Success

ECS has developed nine (9) client specific web based viewer tools for the oil-gas industry. Our clients utilize these tools for numerous functions:

- Information and infrastructure management and maintenance
- Planning, Budgeting and Decision Making
- Internal and contractor communication
- Marketing for product end users and third party financial or resource partners
- Pad expansions
- Midstream and trunk corridor conceptual routing
- Well connects
- Other "What If" Scenarios

